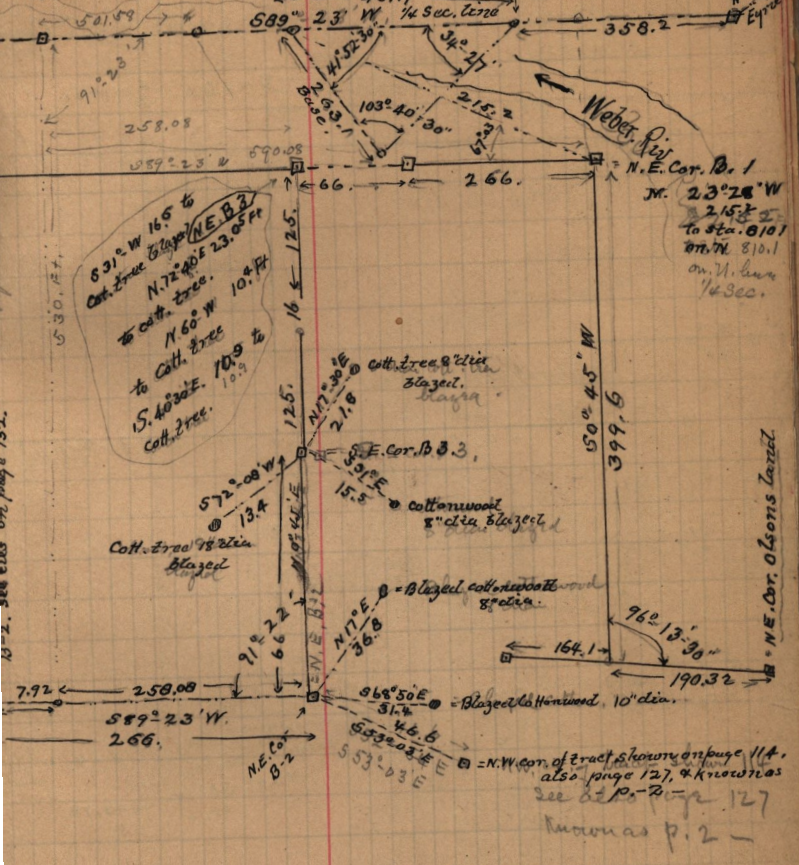


Survey made for N. Tanner "Pebble Park" July 7-1893.



N.E. Cor. B1. Shown above marked by 2"x2"x2' ft stake driven 15" in ground from which Cottonwood tree blazed bears N 6°-W 42. Ft. a Cottonwood tree blazed bears N 77°-50'E 23.4 Ft a cottonwood 8" diam blazed bears S 22°-45'E 38. Ft. dist. Obsty Pk bears S 71°-55'-30"E true course. the E. line B1 bears S 0°-45' W. true course. The N. line of Olsons land bears S 0°-45' W. 399.6 Ft. to a point 19.32 Ft N 83°-W. from the N.E. Cor. of Olsons tract.

B-2. see also on page 132.

= N.W. cor. of tract shown on page 114, also page 127, & known as see also page 127 known as p. 2 -

1/4 Cor. one E. line Sec. 30 T. 6. N. R. 1. W.

N.E. Cor. Olsons Tract